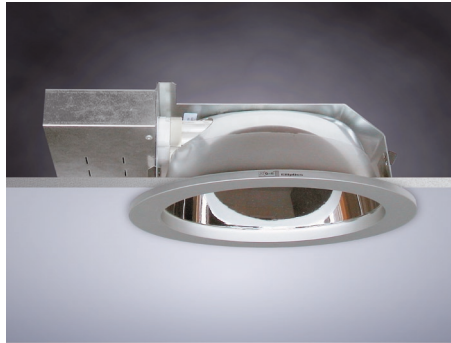
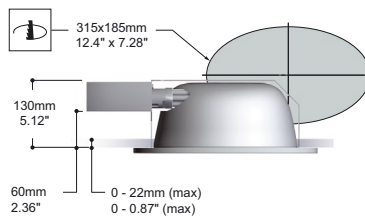


Elliptics

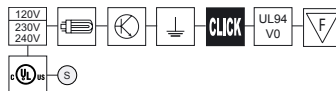
A range of elliptical downlights suitable for horizontally mounted compact fluorescent lamps, CDM-R111 / HCI-R111 lamps, CDM-TD lamps and QR-111 lamps. The reflector is made of metallized UL94V0 polycarbonate protected with a scratch resistant antistatic layer. The bezel is painted silvergrey. Elliptics can be used in a variety of ceiling types with a thickness ranging from 0 to 22 mm (0 to 0.87"). The elliptical cut out is 315 x 185mm (12.4" x 7.28") for which a self-adhesive template is provided with each fitting. The downlight can easily be fitted into the ceiling using a quick-click system.



Elliptics CFL					
code	W	lamp	base	type	lm
26.220	2x26W	TC-D/E	G24q-3	HF	3600
26.420	1x26/32/42W	TC-T/E	GX24q-3/-4	HF	1800/2400/3200



Design: Philip Feenstra, 1994



- ▷ elliptical shaped reflector with scratch resistant antistatic surface
- ▷ decorative silvergrey bezel
- ▷ suitable for ceiling depths of 130mm (min.)